

EFFECT ON SHEAR IN DEEP BEAM BY USING CRIMPED STEEL FIBER

Dalvi Mahesh,

Sapkal Vijay,

Barge Tushar,

Dhumal Harshan,

Admile Pushkraj,

Dr.Nemade Pravin

Department of Civil Engineering

S.B.Patil College of Engineering, Indapur, Pune.

University of Pune-413106(India)

ABSTRACT

This paper evaluates the shear strength of steel fiber reinforced concrete deep beam without stirrups with the help of experimental work. For this experimental work 24 no. of simply supported deep beam without stirrups were cast at the concrete technology laboratory. Test of two point load acting symmetrically with respect to center line of span after the beams were kept in curing room for 28 days. Fiber varied as 0%, 0.26%, 0.52%, 1% by the volume of concrete. Crimped steel fiber are randomly mixed in concrete 18 beam divided into two series. I series shear span to depth ratio kept as 0.60 and II series 0.74. Average ratio of actual and predicted shear strength for different equation is calculated and accuracy of the equation are check out as well as deflection and cracking pattern are also reported.

KEYWORD- Crimped steel fiber, deep beam, shear strength, deflection, shear span to depth ratio.

INTRODUCTION

According to Indian Standard provisions, deep beam is a beam having clear span to overall depth ratio less than 2.0 for simply supported beam and 2.5 for continuous beam. Reinforced concrete deep beams have many applications in building structures such as transfer girders, wall footings, foundation wall caps, floor diaphragms, and shear walls. Continuous deep beams occur as transfer girders in multi-story frames.

The Deep beams are structural elements loaded as simple beams in which a significant amount of the load is carried to the supports by a compression force combining the load and the reaction. A deep beam is a beam having a depth comparable to the span length.^[1]

The strength of deep beams with normal amount of longitudinal reinforcement is usually governed by shear, not flexure. The shear strength of SFRC deep beams depends on different parameters such as type of steel fibers, aspect ratio of fibers, percentage longitudinal reinforcement, a/d ratio and amount of fibers. The addition of small discrete steel fibers into the concrete mix helps to improve the post cracking tensile strength of hardened concrete and hence, significantly small discrete steel fibers into the concrete mix helps to improve the post cracking tensile strength of hardened concrete and hence, significantly enhances the shear strength of reinforced concrete deep beams.

Particularly, the use of deep beams at the lower levels in tall buildings for both residential and commercial purposes has increased rapidly because of their convenience and economical efficiency. The effect of steel fiber in concrete depends on type of steel fiber, aspect ratio (length-to-diameter ratio) of steel fiber and orientation of fibers in concrete.

The great number of parameters that affect the beam strength has led to a limited understanding of shear failure. These parameters include fiber volume fraction, type of fiber, aspect ratio, size effect, percentage web reinforcement, a/d ratio, properties of concrete and steel. It is necessary to know the exact effect of addition of different fiber volume fraction and different shear span-to-depth ratio on shear strength of deep beam. Such an evaluation is needed for designing code which will recognize the contribution of steel fibers to the shear strength of reinforced concrete beams.

Many reports published over the past decades, confirm the effectiveness of steel fibers as shear reinforcement. Fibers are used to boost the shear capacity of concrete or to replace, in part, the vertical stirrups in reinforced concrete structural members, which reduce reinforcement congestion. But, shear strength of deep beams is highly influencing character.

1. INDENTATIONS AND EQUATIONS

Six design equations, namely, the ACI Code 318-05, the UK's CIRIA Guide-2, Draft Eurocode-2, Mansur *et al.* equation, Londhe's equation and Khuntia *et al.* equation are used to estimate the ultimate shear strength of the deep beam specimens.

1.1 ACI 318 [28] Design Model (2005)

The shear provisions apply to both simple and continuous beams when the span to depth ratio is less than 5. The calculations are carried out for the critical section, which is defined as follows. The ACI code assumes that V_c is equal to the shear strength of a beam without stirrups, which in turn, is taken equal to the load at which inclined cracking occurs, is calculated as:

The shear strength beam without stirrups can be computed as follows, In S.I. system (N, mm system)

$$V_c = \left(3.5 - 2.5 \frac{M_u}{V_u}\right) \left(0.16 \sqrt{f'_c} + 17\rho \frac{V_u d}{M_u}\right) bd \dots \dots \dots (1)$$

Where,

M_u and V_u are the ultimate moment and shear at the section under consideration.

f'_c is the concrete compressive strength in MPa,

ρ is the longitudinal reinforcement ratio (A_s/bd) and A_s is the area of longitudinal reinforcement.

1.2 CIRIA Guide-2 [29] Design Model (1977)

1.2.1 Flexural Strength

Capacity of the concrete section is as follows,

$$M_u = 0.12 f_{cu} bd^2 \dots \dots \dots (2)$$

Area of main longitudinal reinforcement,

$$A_s = M_u / 0.87 f_y z \dots \dots \dots (3)$$

Where,

M_u = Ultimate moment,

f_y = Steel characteristic strength,

z = Lever arm, which is to be taken as follows,

$$z = 0.2l + 0.4d, \text{ for single span beams} \dots \dots \dots (4)$$

$$z = 0.2l + 0.3d, \text{ for continuous beams} \dots \dots \dots (5)$$

1.1.1 Shear Strength

The CIRIA Guide applies to beams having an effective span-to-depth ratio of less than 2 for single span beams and less than 2.5 for continuous beams. The CIRIA

Guide-2 method is applicable for the range of $0.5 \leq a/d$ ratio ≤ 01.25 . Ultimate shear strength of deep beam without stirrups is,

$$V_c = \lambda \left[\left(1 - 0.30 \frac{a}{d} \right) \sqrt{f_{cu}} bd \right] \dots\dots\dots (6)$$

Where,

- V_c = Shear strength of concrete beam without stirrups
- $\lambda = 0.44$ for normal weight aggregates,
- f_{cu} = Compressive strength, N/mm²,
- a = Shear span,
- b and d = Width and effective depth of beam.

1.2 R. S. Londhe’s [22] Proposed Equation (2011)

The proposed equation of shear capacity of deep beam without shear reinforcement is as follows

$$V_c = \alpha \left[\left(1 - 0.30 \frac{a}{d} \right) \sqrt{0.80 f_{ck}} bd \right] \dots\dots\dots (7)$$

Where,

- Shear strength of deep beam without shear reinforcement
- α = Empirical coefficient for concrete.
- f_{ck} = Characteristics compressive strength of concrete, N/mm²
- b and d = Width and effective depth of beam
- a = Shear span

$V_c =$

1.3 Draft Eurocode-2 [30] Design Model (1984)

The Draft Euro code applies to simply supported beams of span-to-depth ratio (L/D) less than 2 and to continuous beams of span-to-depth ratio (L/D) less than 2.5.

1.3.1 Flexural Strength: Simply Supported Deep Beams

The area of longitudinal reinforcement is calculated as follows

$$A_s = M / (f_y / \gamma_m) z \dots\dots\dots (8)$$

Where,

- M is the largest applied bending moment in the span,
- f_y is the reinforcement characteristic strength,
- γ_m is the partial safety factor for material and
- z is the lever arm which is to be taken as follows

$$z = 0.2(L + 2D) \quad \text{for } 1 < (L/D) < 2 \dots\dots\dots (9)$$

$$z = 0.6L \quad \text{for } (L/D) < 1 \dots\dots\dots (10)$$

1.3.2 Shear Strength

The shear strength of beam without shear reinforcement is given as follows

$$V_c = 0.10bD \left(\frac{f'_c}{\gamma_m} \right) \dots\dots\dots (11)$$

Where,
b is the width,
D is the beam depth,
f'_c is the characteristic compressive strength of concrete and
 γ_m is a partial safety factor for material.

1.4 **Khuntia et al. [16] Proposed Equation (1999)**

As far as shear strength is concerned, the major difference between the reinforced concrete (RC) beams containing no fibers and those containing fibers lies in the significant post-cracking tensile strength of FRC. Therefore, it is rational to infer that the parameters influencing the ultimate shear strength of FRC beams are those that affect the shear strength of conventional RC beams plus the post-cracking tensile strength of FRC.

The shear strength of FRC is governed by the concrete contribution in the shear without stirrups and contribution of fibers. The shear strength FRC is given as follows

$$V_{frc} = (0.167\alpha_1 + 0.25F)\sqrt{f'_c} bd \dots\dots\dots (12)$$

Where,
 V_{frc} = Shear strength of FRC, F =
 $\alpha_1 = 2.5(d/a)$,
 $V_f \frac{l_f}{d_f}$,
 V_f = Fiber volume fraction,
 l_f = Length of fiber,
 d_f = Diameter of fiber,
 b and d = Width and effective depth of beam,
 a = Shear span

1.5 Mansur *et al.* [2] Proposed Equation (1986)

The equation proposed by Mansur *et al.* for shear strength of FRC is follows

$$V_{frc} = \left(0.16\sqrt{f'c} + 17.2\rho\frac{d}{a} + 0.41\tau F \right) bd \dots\dots\dots (13)$$

Where,

- $f'c$ = Characteristic compressive strength of concrete,
- ρ = Longitudinal reinforcement ratio,
- b and d = Width and effective depth of beam,
- a = Shear span,
- $F = V_f \frac{l_f}{d_f}$,
- V_f = Fiber volume fraction,
- l_f = Length of fiber,
- d_f = Diameter of fiber,

FIGURES AND TABLES

1.3 Shear Test on Beam Specimen

After 28 days curing period, the test beam specimens were removed from the curing tank and both sides of the beam were white-washed to aid observations of the crack development during testing. The beams were tested to failure under gradually increasing load in a Universal Testing Machine (UTM). The capacity of Universal Testing Machine (UTM) is of 1000 KN. A dial gauge was fixed at the bottom of beam to measure the mid-span deflection. Fig1 shows the schematic arrangement of beam in UTM.

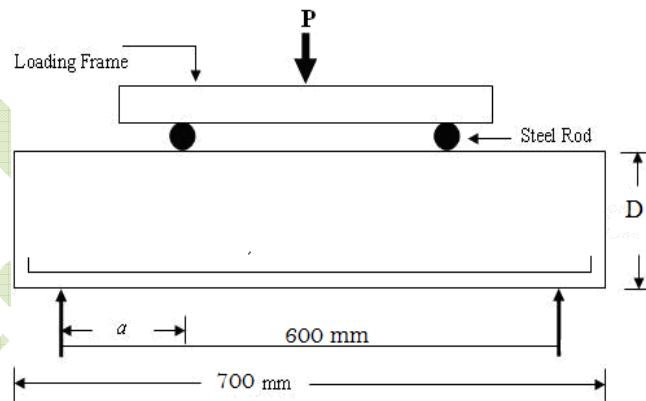


Fig 1: Beam Specimen under UTM

1.4 Beam notations

Total 24 simply supported deep beams were tested up to failure. All beams of specimen series-I were of rectangular cross-section, 90 mm wide and 360 mm deep having clear span of 600 mm. Two bars of 16 mm diameter and two bars of 12 mm diameter were provided as longitudinal reinforcement. Grade of longitudinal reinforcement is Fe-500. Shear span-to-depth ratio is kept as 0.60 for all beams of specimen series-I. The fiber volume fraction varies as 0 %, 0.26 %, 0.52 % and 1 %. For each fiber volume fraction 3 beams were casted. In the notation of all beams of specimen series I and II, series number is given first; this is followed by beam number then fiber volume fraction and then a/d ratio. The details of test beam of series-I which content 0 % fiber is given in Fig 2

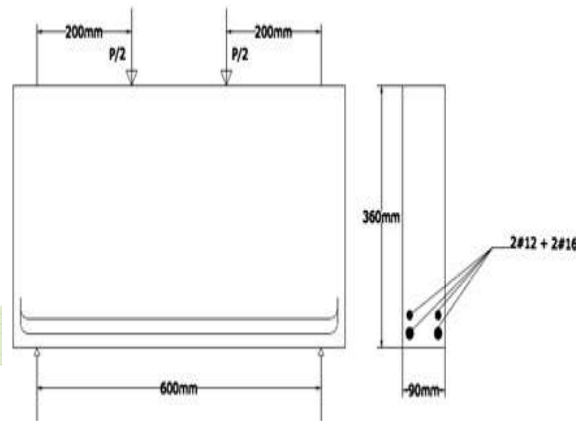


Fig 2: Details of Test Beam of Series-I which Content 0 % Fiber

The details of test beam of series-I which content 0.26 % fiber is given in Fig 3

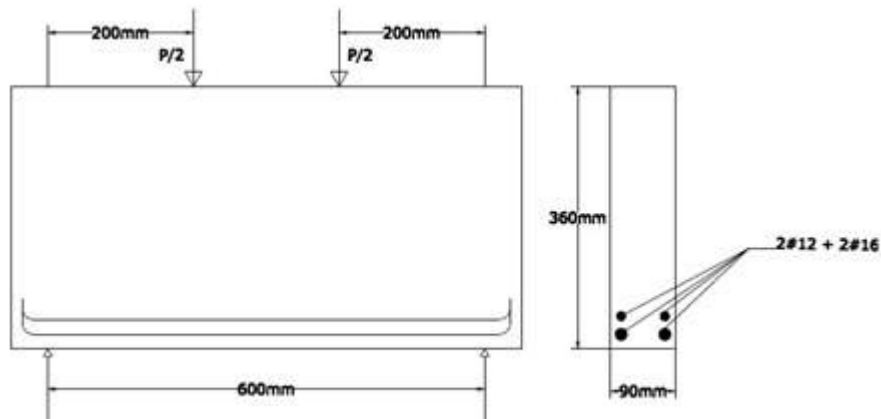


Fig 3: The Details of Test Beam of Series-I which Content 0.26 % Fiber

The details of test beam of series-I which content 0.52 % fiber is given in Fig 4

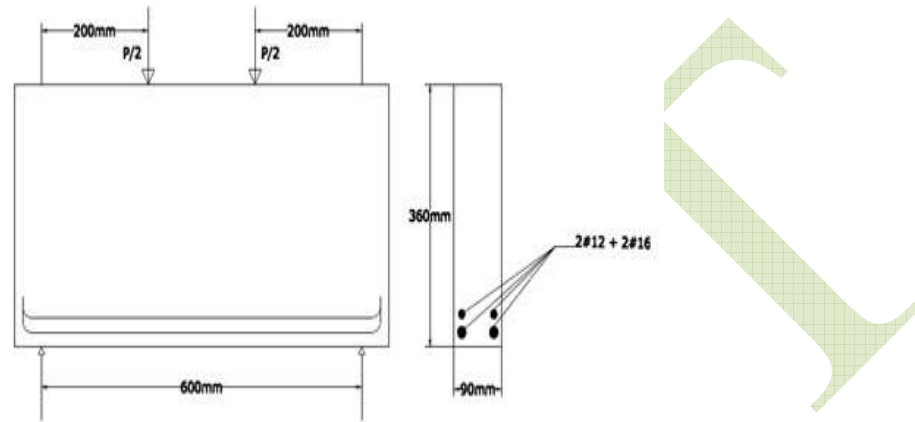


Fig 4: The Details of Test Beam of Series-I which Content 0.52 % Fiber
The details of test beam of series-I which content 1 % fiber is given in Fig 4

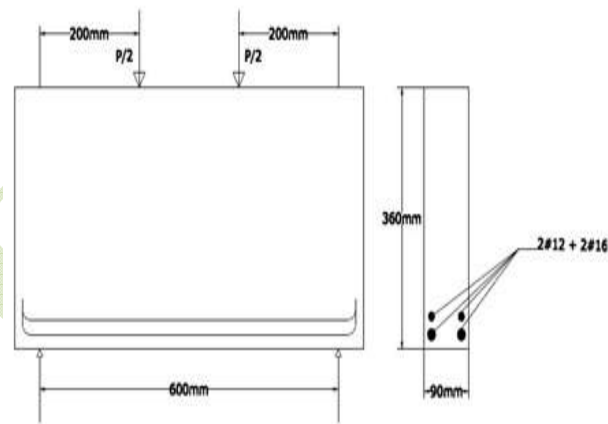


Fig 4: The Details of Test Beam of Series-I which Content 1 % Fiber

All beams of specimen-II series were of rectangular cross-section, 90 mm wide and 330 mm deep having clear span of 600 mm. Two bars of 16 mm diameter and one bars of 12 mm diameter were provided as longitudinal reinforcement. Shear span-to-depth ratio (a/d ratio) is kept as 0.74 for all beams of specimen-II series. The fiber volume fraction varied as 0 %, 0.26 %, 0.52 % and 1 %. For each fiber volume

fraction 3 beams were casted. In the notation of all beams of specimen series-II, series number is given first; this is followed by beam number then fiber volume fraction and then a/d ratio.

The details of test beam of series-II which content 0 % fiber is given in Fig 5

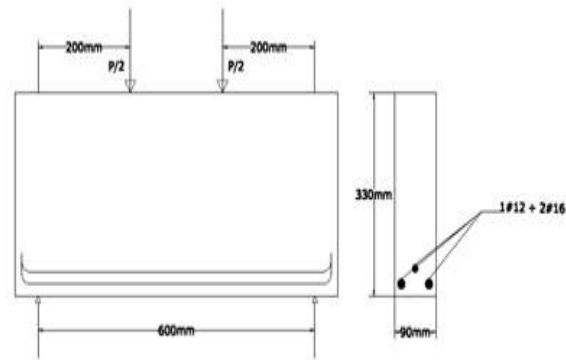


Fig 5: The Details of Test Beam of Series-II which Content 0 % Fiber

The details of test beam of series-II which content 0.26 % fiber is shown in Fig 6

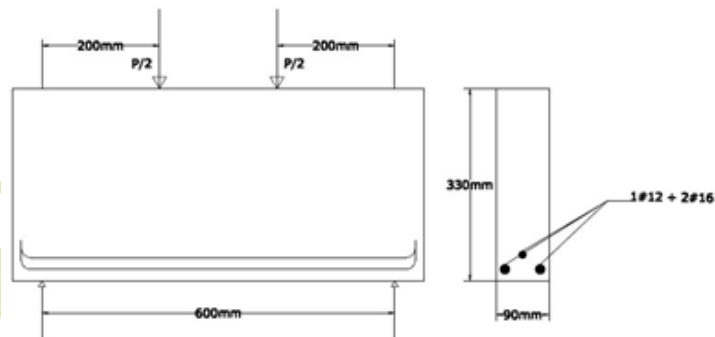


Fig 6: The details of test beam of series-II which content 0.26 % fiber

The details of test beam of series-II which content 0.52 % fiber is shown in Fig 7

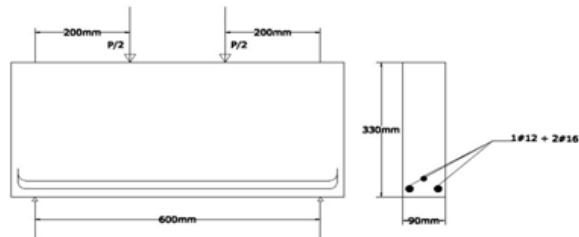


Fig 7: The details of test beam of series-II which content 0.52 % fiber

The details of test beam of series-II which content 1 % fiber is shown in Fig 7

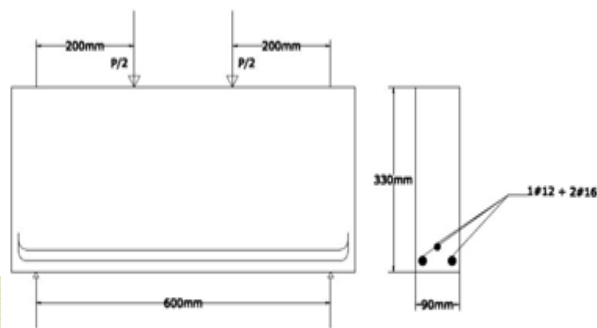


Fig 7: The details of test beam of series-II which content 1% fiber

1.5 Cube Compressive Strength

The results of cube compressive strength for specimen series-I after 28 days curing are obtained and are presented in Table 1.

Table1: Compressive Strength of Concrete for Specimen Series-I, N/mm²

Sr. No.	Cube Designation	% Fiber Content	Cube Compressive Strength (N/mm ²)	Average Cube Compressive Strength (N/mm ²)
1.	C ₁₁	0	45.70	46.99
2.	C ₁₂		47.85	
3.	C ₁₃		47.42	
4.	C ₂₁	0.26	48.50	48.24
5.	C ₂₂		47.96	
6.	C ₂₃		48.26	
7.	C ₃₁	0.52	48.72	50.01
8.	C ₃₂		50.44	
9.	C ₃₃		50.87	
10.	C ₄₁	1	51.73	51.30
11.	C ₄₂		50.87	
12.	C ₄₃		51.30	

The maximum value of compressive strength is 51.30 N/mm² and it is obtained for 1 % fiber content.

The results of cube compressive strength for specimen series-II after 28 days curing are obtained and are presented in Table 2.

Table 2: Compressive Strength of Concrete for Specimen Series-II, N/mm²

Sr. No.	Cube Designation	% Fiber Content	Cube Compressive Strength (N/mm ²)	Average Cube Compressive Strength (N/mm ²)
1.	C' ₁₁	0	46.56	47.52
2.	C' ₁₂		48.28	
3.	C' ₁₃		47.42	
4.	C' ₂₁	0.26	47.50	47.83
5.	C' ₂₂		47.96	
6.	C' ₂₃		48.05	
7.	C' ₃₁	0.52	50.87	50.44
8.	C' ₃₂		51.30	
9.	C' ₃₃		49.15	
10.	C' ₄₁	1	51.73	50.87
11.	C' ₄₂		50.01	
12.	C' ₄₃		50.87	

The maximum value of compressive strength is 50.87 N/mm² and it is obtained for 1 % fiber content. It is observed from Table1 and Table2 that the compressive strength of concrete increases with increase in percentage fiber content, but there is not much more increase in compressive strength for 1 % fiber content when compared to 0.52 % fiber content.

1.6 Central Deflection of Beams

1.6.1 Central Deflection of Beam Specimen Series-I

Results of central deflection of beam specimen series-I are presented in Table3. The graph of central deflection with respect to load is presented in Fig 8.

Table 3: Results of Central Deflection for Beam Specimen Series-I, mm

0% Fiber Content		0.26 % Fiber Content		0.52 % Fiber Content		1 % Fiber Content	
Load (kN)	Deflection (mm)	Load (kN)	Deflection (mm)	Load (kN)	Deflection (mm)	Load (kN)	Deflection (mm)
0	0.00	0	0.00	0	0.00	0	0.00
20	0.03	20	0.00	20	0.00	20	0.00
40	0.08	40	0.07	40	0.05	40	0.02
60	0.12	60	0.14	60	0.12	60	0.08
80	0.16	80	0.20	80	0.20	80	0.13
100	0.21	100	0.28	100	0.27	100	0.19
106.6	0.23	120	0.35	120	0.34	120	0.24
		140	0.41	140	0.39	140	0.29
		142	0.42	160	0.46	160	0.36
				167.7	0.48	180	0.42
						200	0.49

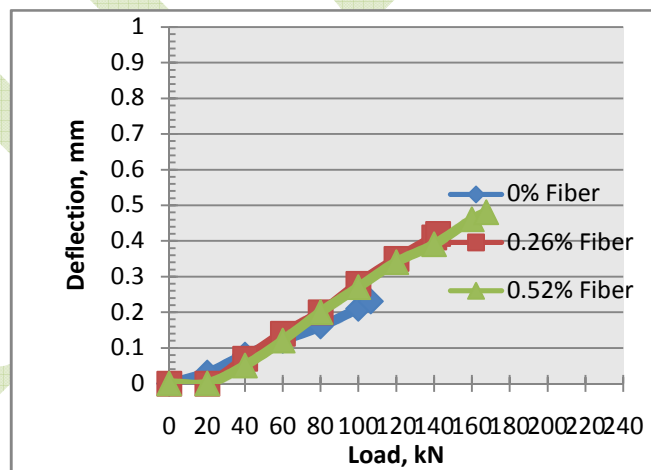


Fig 8: The Graph of Central Deflection with respect to Load, Specimen-I

From Table3 and Fig 8 it is observed that, deflection increases with increase in fiber content.

1.6.2 Central Deflection of Beam Specimen Series-II

Results of central deflection of beam specimen series-II are presented in Table4 and the graph of central deflection with respect to load is presented in Fig 9.

Table 4: Results of Central Deflection of Beam Specimen Series-II, mm

0% Fiber Content		0.26 % Fiber Content		0.52 % Fiber Content		1 % Fiber Content	
Load (kN)	Deflection (mm)	Load (kN)	Deflection (mm)	Load (kN)	Deflection (mm)	Load (kN)	Deflection (mm)
0	0.00	0	0.00	0	0.00	0	0.00
20	0.08	20	0.00	20	0.00	20	0.00
40	0.18	40	0.07	40	0.06	40	0.01
60	0.24	60	0.15	60	0.12	60	0.07
80	0.29	80	0.20	80	0.18	80	0.14
80.3	0.29	100	0.26	100	0.23	100	0.22
		107.9	0.28	120	0.30	120	0.28
				127.4	0.33	140	0.34
						160	0.41
						180	0.46
						200	0.50
						200.4	0.50

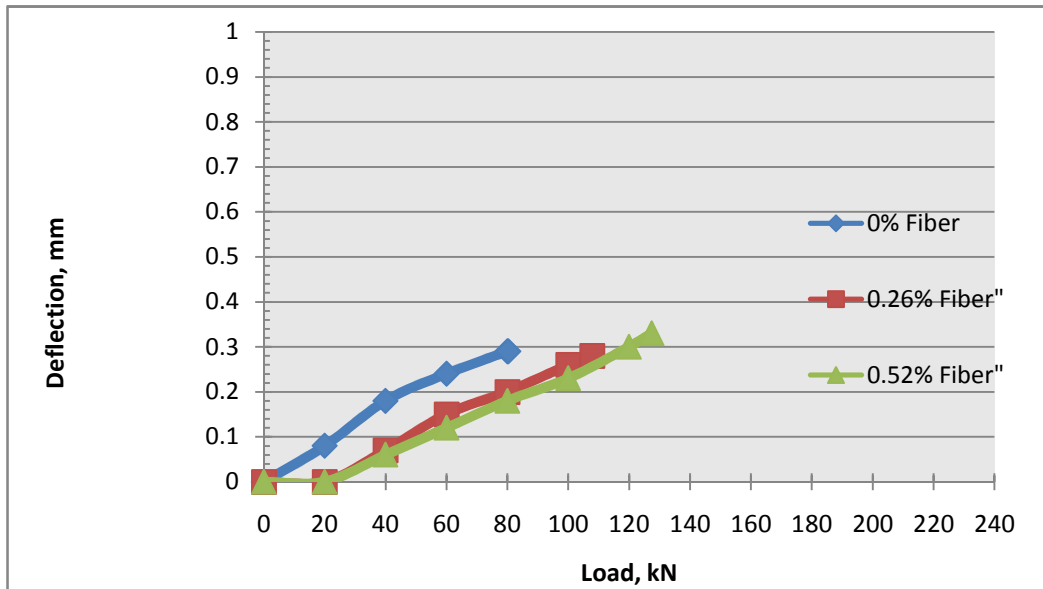


Fig 9: The Graph of Central Deflection with respect to Load, Specimen-II

From Table 4, Fig 9, it is observed that, deflection is directly proportional to fiber content. There is considerable increase in deflection for beam of 3 % fiber content.

1.7 Calculation Ultimate of Shear Stress

1.7.1 Ultimate Shear Stress for Beam Specimen Series-I

Results of ultimate shear stress for specimen series-I are presented in Table 5 and the comparison of ultimate shear stress of concrete with respect to fiber content is presented in Fig 10.

Table 5: Ultimate Shear Stress for Specimen Series-I, N/mm²

Beam Notations	% Fiber Content	Shear Load (kN)	Average Shear Load (kN)	Ultimate Shear Stress (N/mm ²)	Average Ultimate Shear Stress (N/mm ²)
IB11-0.60	0%	49.46	53.31	1.665	1.794
IB12-0.60		51.10		1.720	
IB13-0.60		59.37		1.998	
IB21-0.60	0.26%	63.65	71.0	2.143	2.390
IB22-0.60		71.05		2.392	
IB23--0.60		78.30		2.636	
IB31-0.60	0.52%	79.85	83.86	2.688	2.823
IB32-0.60		83.23		2.802	
IB33-0.60		88.51		2.980	
IB41-0.60	1.0%	124.54	122.75	4.193	4.132
IB42-0.60		120.21		4.047	
IB43-0.60		123.50		4.158	

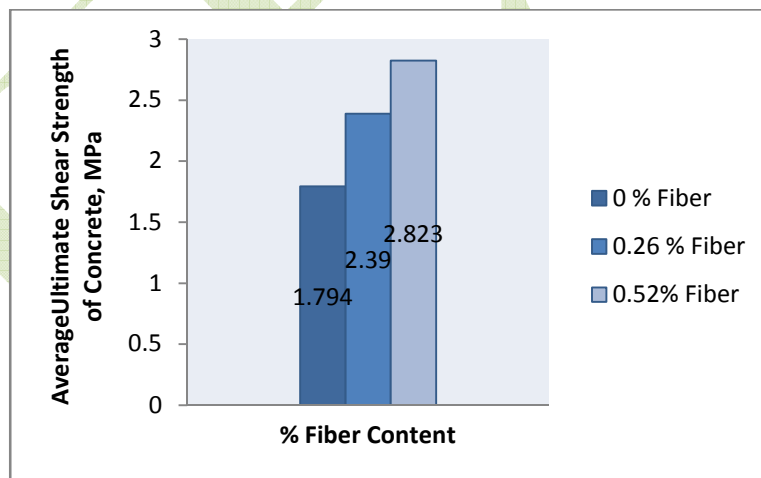


Fig 10: Comparison of Ultimate Shear Stress with respect to Fiber Content.

From the Figure 4.5, the maximum value of ultimate shear stress 2.823 N/mm^2 is observed at 0.52 % of fiber content.

4.5.2 Ultimate Shear Stress for Specimen Series-II

Results of ultimate shear stress for specimen series-II are presented in Table 6 and the comparison of ultimate shear stress of concrete with respect to fiber content is presented in Fig 11.

Table 6: Ultimate Shear Stress for Specimen Series-II, N/mm^2

Beam Notations	% Fiber Content	Shear Load (kN)	Average Shear Load (kN)	Ultimate Shear Stress (N/mm^2)	Average Ultimate Shear Stress (N/mm^2)
IIB'11-0.74	0%	39.86	40.19	1.640	1.653
IIB'12-0.74		36.81		1.514	
IIB'13-0.74		43.90		1.806	
IIB'21-0.74	0.26 %	49.78	53.95	2.048	2.220
IIB'22-0.74		58.45		2.412	
IIB'23-0.74		53.62		2.206	
IIB'31-0.74	0.52 %	60.23	63.72	2.478	2.622
IIB'32-0.74		67.67		2.784	
IIB'33-0.74		63.26		2.603	
IIB'41-0.74	1.0%	99.20	100.2	4.082	4.123
IIB'42-0.74		100.11		4.119	
IIB'43-0.74		101.30		4.168	
IIB'51-0.74	2.5%	52.86	51.95	2.175	2.137
IIB'52-0.74		49.08		2.019	
IIB'53-0.74		53.92		2.218	

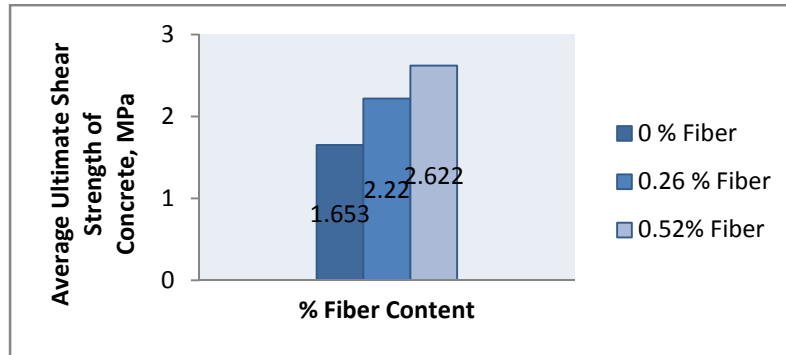


Fig11: Ultimate Shear Stress of Concrete with respect to Fiber Content

From the Figure 4.6, it is observed the maximum value of ultimate shear stress 2.622 N/mm^2 is observed at 0.52 % of fiber content and shear stress increases with increase in fiber content.

4.5.3 The Ultimate Shear Stress of Concrete with respect to *a/d* Ratio and % Fiber Content.

The ultimate shear stress of concrete with respect to *a/d* ratio and % fiber content is presented in Table7. The comparison of ultimate shear strength of concrete with respect to *a/d* ratio and percentage fiber content is presented in Fig 12.

Table 7: Ultimate Shear Strength of Concrete with respect to *a/d* Ratio and % Fiber Content.

Sr. No.	Fiber Content (%)	<i>a/d</i> Ratio	Ultimate Shear Stress (N/mm^2)
1	0	0.60	1.794
2		0.74	1.653
3	0.26	0.60	2.390
4		0.74	2.220
5	0.52	0.60	2.823

6		0.74	2.622
7	1.0%	0.60	4.132
8		0.74	4.123

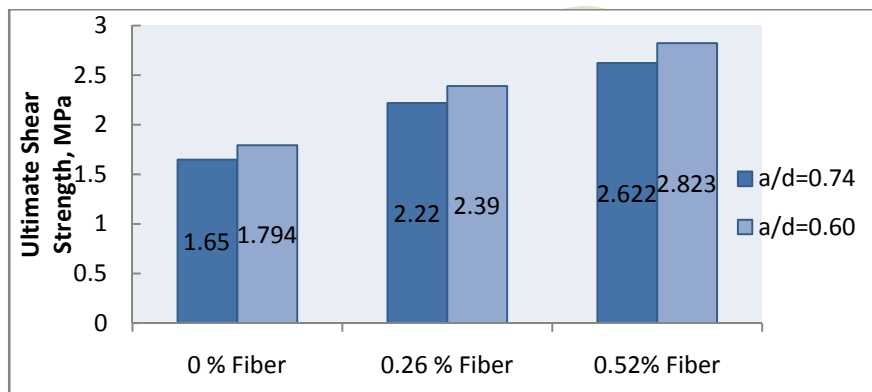


Figure 12: Ultimate Shear Strength of Concrete with respect to a/d Ratio and % Fiber Content

From Table 7 and Fig 12, it is observed that ultimate shear stress is directly proportional to percentage fiber content and inversely proportional to a/d ratio.

4.5.4 Percentage Increase in Ultimate Shear Stress

Results of percentage increase in ultimate shear stress are presented in Table 8.

Table 8: Percentage Increase in Ultimate Shear Stress, N/mm²

Sr. No.	<i>a/dRatio</i>	% of Fiber	Ultimate Shear Stress (N/mm ²)	Increase in Ultimate Shear Stress (%)
1.	0.60	0	1.794	0
2.		0.26	2.390	33.22
3.		0.52	2.823	57.35
4.		1.0	4.132	230.32
5.		2.5	2.278	26.97
6.	0.74	0	1.650	0
7.		0.26	2.220	34.54
8.		0.52	2.622	58.90
9.		1.0	4.123	249.8
10		2.5	2.137	29.51

4.6 Cracking Shear Stress

4.6.1 Cracking Shear Stress for Specimen Series-I

Results of cracking shear stress for specimen series-I are presented in Table 9 and the comparison of cracking shear stress with respect to fiber content is presented in Fig 13.

Table 9: Cracking Shear Stress for Specimen Series-I, N/mm²

Beam Notations	% Fiber Content	Cracking Load (kN)	Average Cracking Load (kN)	Cracking Shear Stress (N/mm ²)	Average Cracking Shear Stress (N/mm ²)
IB11-0.60	0%	26.75	25.68	0.898	0.864
IB12-0.60		22.31		0.751	
IB13-0.60		27.98		0.942	
IB21-0.60	0.26%	39.58	44.18	1.330	1.487
IB22-0.60		43.69		1.471	
IB23-0.60		49.27		1.658	
IB31-0.60	0.52%	51.65	56.73	1.739	1.910
IB32-0.60		57.37		1.931	
IB33-0.60		61.17		2.059	
IB41-0.60	1.0%	91.56	89.52	3.082	3.013
IB42-0.60		90.82		3.057	
IB43-0.60		86.18		2.901	

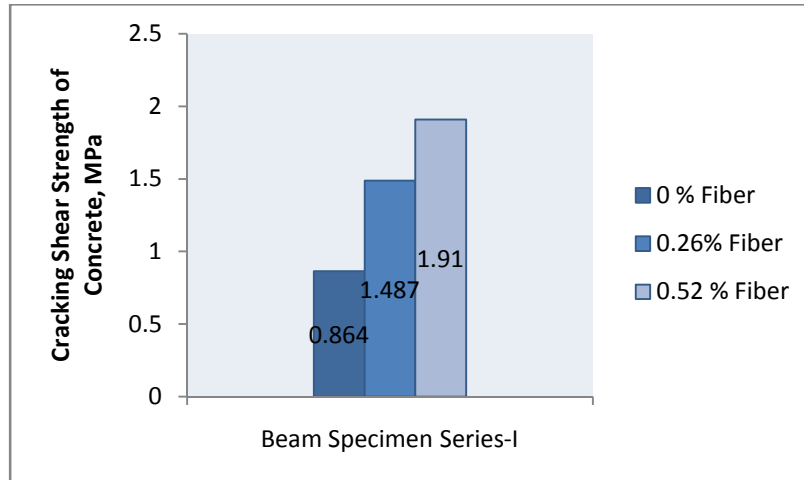


Fig 13: Cracking Shear Stress with respect to Fiber Content

From Table 9 and Fig 13, it is observed that, the maximum value of cracking shear stress 1.91 N/mm^2 is observed at 0.52 % of fiber content and cracking shear stress is directly proportional to % fiber content.

4.6.2 Cracking Shear Stress for Specimen Series-II

Results of cracking shear stress for specimen series-II are presented in Table 10 and the comparison of cracking shear stress of concrete with respect to % fiber content is presented in Fig 14.

Beam Notations	% Fiber Content	Cracking Load (kN)	Average Cracking load (kN)	Cracking Shear Stress (N/mm ²)	Average Cracking Shear Stress (N/mm ²)
ΠB'1 1- 0.74	0%	19.02	18.82	0.783	0.774
ΠB'1 2- 0.74		18.13		0.746	
ΠB'1 3- 0.74		19.32		0.795	
ΠB'2 1- 0.74	0.26 %	31.235	30.739	1.285	1.265
ΠB'2 2- 0.74		33.56		1.381	
ΠB'2 3- 0.74		27.422		1.128	
ΠB'3 1- 0.74	0.52 %	39.63	42.98	1.630	1.769
ΠB'3 2- 0.74		45.30		1.864	
ΠB'3 3- 0.74		44.01		1.811	
ΠB'4 1- 0.74	1.0%	52.95	53.86	2.179	2.216
ΠB'4 2- 0.74		50.38		2.073	
ΠB'4 3- 0.74		58.25		2.397	
ΠB'5 1- 0.74	2.5%	39.56	39.47	1.504	1.624
ΠB'5 2- 0.74		38.45		1.582	

IIB'5 3- 0.74	40.40		1.662	
---------------------	-------	--	-------	--

Table 10: Cracking Shear Stress for Specimen Series-II, N/mm²

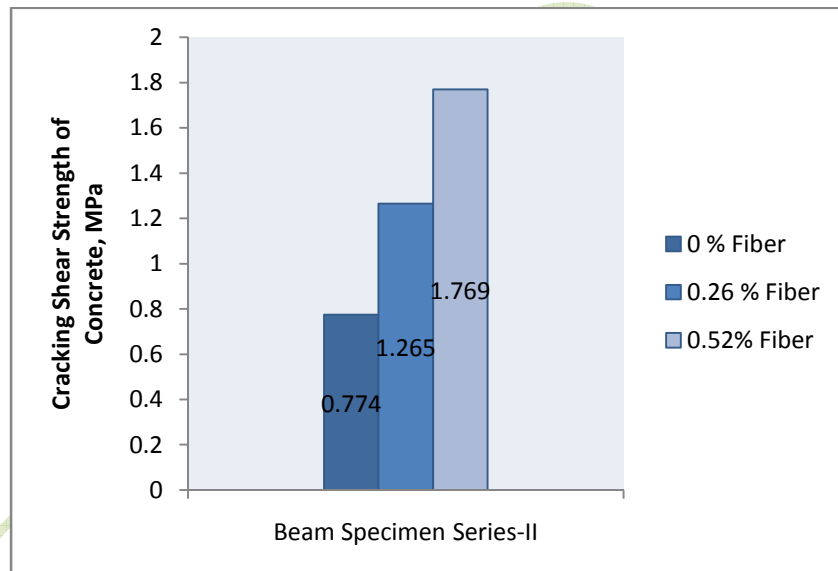


Fig 14: Cracking Shear Stress of Concrete with respect to % Fiber Content

From Table 4.10 and Figure 14, the maximum value of cracking shear stress 1.769 N/mm² is observed at 0.52 % of fiber content.

Cracking shear stress of concrete with respect to *a/d* ratio and percentage fiber content is presented in Table 11. The comparison of cracking shear stress of concrete with respect to *a/d* ratio and percentage fiber content is presented in Fig 15.

Sr. No.	Fiber Content (%)	a/d Ratio	Cracking Shear Stress (N/mm ²)
1.	0	0.60	0.864
2.		0.74	0.774
3.	0.26	0.60	1.487
4.		0.74	1.265
5.	0.52	0.60	1.910
6.		0.74	1.769
7.	1.0	0.60	3.013
8.		0.74	2.216
9.	2.5	0.60	1.668
10.		0.74	1.624

Table 11: Cracking Shear Stress of Concrete with respect to a/d Ratio and Percentage Fiber Content, N/mm²

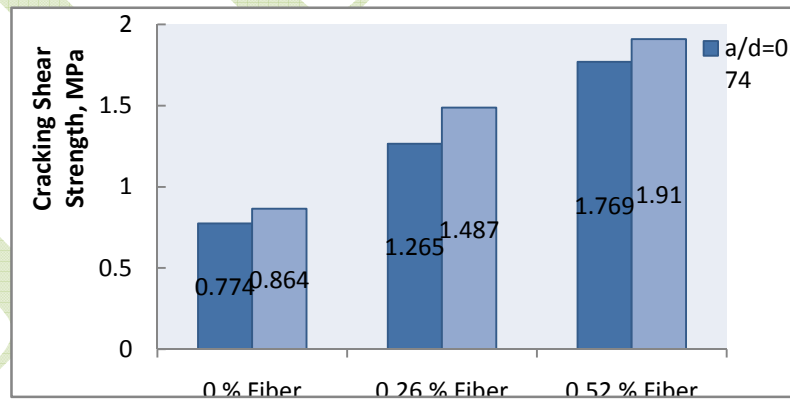


Fig 15: Cracking Shear Stress of Concrete with respect to a/d Ratio and % Fiber Content

From Table 11 and Fig 15, it is observed that cracking shear stress is directly proportional to percentage fiber content and inversely proportional to a/d ratio.

4.6.4 Percentage Increase in Cracking Shear Stress

Results of percentage increase of cracking shear stress are presented in Table 12.

Table 12: Percentage Increase in Cracking Shear Stress, N/mm^2

Sr.	a/d Ratio	Fiber Content (%)	Cracking Shear Stress (N/mm^2)	Increase in Cracking Shear Stress (%)
1.	0.60	0	0.864	0
2.		0.26	1.487	72.10
3.		0.52	1.910	110.64
4.		1.0	3.013	348.72
5.		2.5	1.668	93.05
6.	0.74	0	0.774	0
7.		0.26	1.265	63.43
8.		0.52	1.769	128.55
9.		1.0	2.216	286.30

Calculation of Shear Strength by Different Shear Design Models

Six design models, namely, ACI Code 318-05, UK's CIRIA Guide-2, Draft Eurocode-2 (CEB-FIP Model Code), equation of Londhe, equation of Mansur *et al.* and equation of Khuntia *et al.* are used to estimate the ultimate shear strength of the deep beam specimens.

4.71 Evaluation of Mansur *et al.* [2] Equation (1986)

Table 14: Calculation of Shear Strength by Mansur’s Equation, KN

$$V_{JR} = \left(0.16 \sqrt{f'_c} - 17.26 \frac{d}{s} + 0.11 \tau \right) bd$$

, h = 90

Beam Designation	a/d	f'c	F	$\frac{d}{s}$	τ	V_{MANSUR}	V_{TEST}	$\frac{V_{TEST}}{V_{MANSUR}}$	Mean
IB-0%	0.60	35.16	0	1.65	4.032	45.82	53.31	1.16	1.15
IIB-0%	0.74	35.8	0	1.35	4.068	35.11	40.19	1.14	
IB-0.26%	0.60	37.39	0.078	1.65	4.138	50.70	71.0	1.40	1.40
IIB-0.26%	0.74	36.52	0.078	1.35	4.109	38.53	53.95	1.40	
IB-0.52%	0.60	39.56	0.156	1.65	4.276	55.71	83.86	1.505	1.496
IIB-0.52%	0.74	39.32	0.156	1.35	4.263	42.85	63.72	1.487	
IB-1.0%	0.60	41.41	0.3	1.65	4.375	64.21	122.75	1.911	1.961
IIB-1.0%	0.74	41.20	0.3	1.35	4.364	49.79	100.2	2.012	

4.71.1 Evaluation of Ciria Guide-2 [32] Design Equation (1977)

Table 15: Calculation Shear Strength by Ciria Guide-2 Design Equation, KN

$$V_c = k \left[\left(1 - 0.30 \frac{f_{cu}}{f_{ck}} \right) \sqrt{f_{cu}} b d \right], b = 90$$

Beam Notations	a/d	f_{cu}	d	V_{CIRIA}	V_{TEST}	V_{TEST}/V_{CIRIA}	Mean
IB-0%	0.60	43.95	330	71.0	53.31	0.750	0.736
IB-0%	0.74	44.75	270	55.6	40.19	0.722	
IB-0.26%	0.60	46.74	330	73.26	71.0	0.969	0.964
IB-0.26%	0.74	45.66	270	56.20	53.95	0.959	
IB-0.52%	0.60	49.45	330	75.35	83.86	1.112	1.101
IB-0.52%	0.74	49.16	270	58.32	63.72	1.09	
IB-1.0%	0.60	51.77	330	77.09	122.75	1.592	1.635
IB-1.0%	0.74	51.51	270	59.70	100.2	1.678	

Table 16: Calculation of Shear Strength by Londhe's Equation, KN

$V_c = \alpha \left[\left(1 - 0.30 \frac{a}{d} \right) \sqrt{0.80 f_{ck} bd} \right], b = 90$							
Beam Notations	a/d	f_{ck}	d	V_{LONDHE}	V_{TEST}	$\frac{V_{TEST}}{V_{LONDHE}}$	Mean
IB-0%	0.60	43.95	330	50.51	53.31	1.05	1.03
IIB-0%	0.74	44.75	270	39.56	40.19	1.01	
IB-0.26%	0.60	46.74	330	52.12	71.0	1.36	1.356
IIB-0.26%	0.74	45.66	270	39.96	53.95	1.35	
IB-0.52%	0.60	49.45	330	53.61	83.86	1.56	1.545
IIB-0.52%	0.74	49.16	270	41.48	63.72	1.53	
IB-1.0%	0.60	51.77	330	54.85	122.75	2.237	2.298
IIB-1.0%	0.74	51.51	270	42.47	100.2	2.359	

4.71.2 Evaluation of Londhe's [22] Design Equation (2011)

4.72 Summary Test

Table 19: Comparison Equation with respect to Mean Value of $V_{TEST}/V_{EQUATION}$

Reference	Equation	Mean $V_{TEST}/V_{EQUATION}$
Mansur <i>et al.</i> (1986)	$V_{frc} = \left(0.16\sqrt{f'c} + 17.2\rho\frac{d}{a} + 0.41\tau F \right) bd$	1.818
Ciria Guide-2 (1977)	$V_c = \lambda \left[\left(1 - 0.30\frac{a}{d} \right) \sqrt{f_{cu}} bd \right]$	2.269
Londhe (2011)	$V_c = \alpha \left[\left(1 - 0.30\frac{a}{d} \right) \sqrt{0.80f_{ck}} bd \right]$	2.545

From Table 19, it is observed that the equation proposed by Draft Eurocode gives good results for shear strength of concrete deep beams without fibers as compared to the equations proposed by other codes and researchers. The equation proposed by Mansur *et al.* gives good results for shear strength of steel fiber reinforced concrete deep beams. The results given by Ciria Guide-2 and Londhe's equation are on higher sides.

CONCLUSIONS

This chapter presents the major conclusions and future scope of the investigation to determine the shear strength of SFRC deep beams. Based on the test results and verification with other authors following conclusions can be drawn.

1. The inclusion of short steel fibers in concrete mix provides effective shear reinforcement in deep beams.
2. Steel fibers in concrete deep beams provides better crack control and deformation characteristic of beams.
3. Both the first crack strength and ultimate strength in shear increase with increase in fiber content because of their increased resistance to propagation of cracks.
4. The addition of steel fibers increases the compressive strength of concrete. Maximum compressive strength of concrete is obtained for 1% fiber content.
5. The cracking shear strength and ultimate shear strength increases with increasing percent of fiber content and decreasing o_f/d ratio.
6. Maximum increase of 230.32% in ultimate load for beam containing 1% fiber content was observed when compared with beam containing no fiber content.
7. Maximum increase of 348.72% in first cracking load for beam containing 1% fibers was observed when compared with beam containing no fiber content.
8. The equation proposed by Mansur *et al.* gives good results for shear strength of concrete deep beams without fibers as compared to equations proposed by other codes and authors. The equation proposed by R.S. Londhe gives maximum result for shear strength of steel fiber reinforced concrete deep beams. This equation seems to be appropriate to estimate shear strength of normal strength concrete to high strength concrete, which shows the uniqueness of this equation. Therefore, it can be proposed to include this equation in design codes of practice in case of fiber reinforced concrete beam.
9. The results given by Ciria guide-2 and draft Eurocode are also satisfactory. While the results given by R.S. Londhe are safe and on the higher side.

ACKNOWLEDGEMENTS

This is to acknowledge & thank all the individuals who played defining role in shaping my project. Without their consent support, guidance & assistance this project would not have been

completed. I acknowledge with thanks, the guidance & generous help rendered by my Project guide Dr. P.D.Nemade & Co-guide Prof P.R.Admile my, for their valuable guidance, continual encouragement & advice. I think without their humble support it won't be possible.

I am also thankful to Prof N.T.Suryawanshi, the Professor & Head of the Department of Civil Engineering for supporting as & when required for their valuable suggestions & advice during project work.

REFERENCES

- [1] V.V.Balgude (2014) *IOSR Journal of Mechanical and Civil Engineering (IOSR-JMCE)* e-ISSN: 2278-1684, p-ISSN: 2320-334X, Volume 11, Issue 2 Ver. IV (Mar- Apr. 2014), PP 24-39 www.iosrjournals.org
- [2] T. M. Roberts and N. L. Ho (1982), "Shear Failure of Deep Fibre Reinforced Concrete", *The International Journal of Cement Composites and Lightweight Concrete*, Vol. 4, pp. 145-152.
- [3] M. A. Mansur, K. C. G. Ongand P. Paramasivam (1986), "Shear Strength of Fibrous Concrete Beams without Stirrups", *Journal of Structural Engineering, ASCE*, Vol. 112(9), pp. 2066-2079.
- [4] S. K. Madan, G. R. Kumar and S.P. Singh (2007), "Steel Fibers as Replacement of Web Reinforcement for RCC Deep Beams in Shear", *Asian Journal of Civil Engineering*, Vol. 8(5), pp. 479-489.
- [5] W. Y. Lu (2006), "Shear Strength Prediction for Steel Reinforced Concrete Deep Beams", *Journal of Constructional Steel Research*, Vol. 62, pp. 933-942.
- [6] M. S. Alam, E. Slater and M.Moni (2012), "Predicting the Shear Strength of Steel Fiber Reinforced Concrete Beams", *Construction of Building Materials*, Vol. 26, pp. 423-436.
- [7] V. Vengatachalapathy (2010), "Behavior and Ultimate Strength of Steel Fiber Reinforced Concrete (SFRC) Deep Beams with and without Openings", *International Journal of Civil and Structural Engineering*, Vol. 1(3), pp. 509-517.
- [8] H. H. Dinh, G. J. Parramontesinos, and J. K. Wight (2011), "Shear Behavior of Steel Fiber Reinforced Concrete Beams without Stirrup Reinforcement", *Journal of Structural Engineering, ASCE*, Vol. 137(10), pp. 10.39-1051.
- [9] R. S. Londhe (2009), "Experimental Study of Shear Strength of Concrete Beams Reinforced with Longitudinal Tension Steel", *Asian Journal of Civil Engineering and Housing*, Vol. 10(3), pp. 257-264.
- [10] K. H. Tan and M. A. Mansur (1990), "Shear Transfer in Fiber Reinforced Concrete", *Journal of Structural Engineering, ASCE*, Vol. 2(4), pp. 202-214.

- [11] J. Susetyo, P. Gauvreau, and F. Vecchio (2011), "Effectiveness of Steel Fiber as Minimum Shear Reinforcement", *ACI Structural Journal*, Vol. 108(4), pp. 488-496.
- [12] Y. K. Kwak, W. S. Kim and J. kim (2002), "Shear Strength Steel Fiber Reinforced Concrete Deep Beams without Stirrups", *ACI Structural Journal*, Vol. 99(4), pp. 530-538.
- [13] R. Narayanan and I. Y. S. Darwish (1987), "Use of Steel Fibers as Shear Reinforcement", *ACI Structural Journal*, Vol. 84(3), pp. 216-227.
- [14] R. N. Swamy and H. M. Bahia (1985), "Effectiveness of Steel Fibers as Shear Reinforcement", *Concrete International: Design and Construction*, Vol. 7(3), pp. 35-40.
- [15] A. A. Mirsayah and N. Banthia (2002), "Shear Strength of Steel Fiber-Reinforced Concrete", *ACI Materials Journal*, Vol. 99(5), pp. 473-479.
- [16] P. Y. Pawade, P. B. Nagarnaik and A. M. Pande (2011), "Performance of Steel Fiber on Standard Strength Concrete in Compression", *International Journal of Civil and Structural Engineering*, Vol. 2(2), pp. 483-492.
- [17] M. Khuntia, S. Bozidar and S. C. Goel (1999), "Shear Strength of Normal and High Strength Fiber Reinforced Concrete Beams without Stirrups", *ACI Structural Journal*, Vol. 96(2), pp. 282-290.
- [18] V. R. Patel and I. I. Pandya (2010), "Evaluation of Shear Strength of SFRC Moderate Deep Beams using Strut-and-Tie Models", *International Journal of Modern Engineering Research*, Vol. 1, pp. 15-20.
- [19] J. Y. Lee and U. Y. Kim (2008), "Effect of Longitudinal Tensile Reinforcement Ratio and a/d Ratio on Minimum Shear Reinforcement in Beam", *ACI Structural Journal*, Vol. 105(2), pp. 134-144.
- [20] K. H. Yang and A. F. Ashour (2008), "Effectiveness of Web Reinforcement around Openings in Continuous Concrete Deep Beams", *ACI Structural Journal*, Vol. 105(4), pp. 414-424.
- [21] B. Singh and S. K. Kaushik (2006), "Design of Continuous Deep Beam using Strut-and-Tie Method", *Asian Journal of Civil Engineering*, Vol. 7(5), pp. 461-477.
- [22] Inamdar KA. Experimental Investigation in SFRC Beams under Shear Reinforced with Longitudinal Steel, M.E. Dissertation report submitted to Department of Applied Mechanics, Government College of Engineering, Aurangabad (MS), India, October 2008.
- [23] G. Aguilar, A. B. Matamoros and J. Gustavo (2002), "Experimental Evaluation of Design Procedures for Shear Strength of Deep Reinforced Concrete Beams", *ACI Structural Journal*, Vol. 99(4), pp. 539-54.
- [24] R. S. Londhe (2011), "Shear Strength Analysis and Prediction of Reinforced Concrete Transfer Beams in High Rise Buildings", *Structural Engineering and Mechanics*, Vol. 37(1), pp. 39-59.
- [25] H. Yakoub (2011), "Shear Stress Prediction: Steel Fiber-Reinforced Concrete Beams without Stirrups", *ACI Structural Journal*, Vol. 108(3), pp. 304-314.
-

- [26] Y. Ding and Zhiguo (2011), "The Composite Effect of Steel Fibres and Stirrups on the Shear Behavior of Beams using Self-Consolidating Concrete", *Engineering Structures*, Vol. 33, pp. 107-117.
- [27] H. H. Dinh, J. K. Wight (2010), "Shear Behavior of Steel Fiber Reinforced Concrete Beams without Stirrup Reinforcement", *ACI Structural Journal*, Vol. 107(5), pp. 597-606.
- [28] K. Noghabai (2000), "Beams of Fibrous Concrete in Shear and Bending: Experiment and Model", *Journal of Structural Engineering, ASCE*, Vol. 126(2), pp. 243-251.
- [29] CIRIA Guide-2 (1977), "The Design of Deep Beams in Reinforced Concrete, Ove Arup and Partners", *Construction Industry Research and Information Association, London*.
- [30] Eurocode 2 (2004), "Design of Concrete Structure", *British Standard Institution*.