

MODERN TECHNICAL METHODS OF MONITORING LANDSLIDES IN OPEN MINES

Djaksimuratov Karamatdin Mustapaevich
Candidate of Natural Sciences, Nukus Mining Institute

Maulenov Nurlibek Axmet o'g'li
Student of Nukus Mining Institute

Ametov Ruslan Muxtar o'g'li
Student of Nukus Mining Institute

Rametullayeva Mehriban Polatbek qizi
Student of Nukus Mining Institute

Bayramova Minevvar Axmet qizi
Student of Nukus Mining Institute

ABSTRACT

Landslide is one of the multitudinous serious geological hazards. The key to its control and reduction lies on dynamic monitoring and early warning. The article points out the insufficiency of traditional measuring means applied for large-scale landslide monitoring and proposes the method for extensive landslide displacement field monitoring using highresolution remote images. Matching of cognominal points is realized by using the invariant features of SIFT algorithm in image translation, rotation, zooming, and affine transformation, and through recognition and comparison of characteristics of high-resolution images in different landsliding periods. Following that, landslide displacement vector field can be made known by measuring the distances and directions between cognominal points. As evidenced by field application of the method for landslide monitoring at West Open Mine in Fushun city of China, the method has the attraction of being able to make areal measurement through satellite observation and capable of obtaining at the same time the information of largearea intensive displacement field, for facilitating automatic delimitation of extent of landslide displacement vector field and sliding mass. This can serve as a basis for making analysis of laws governing occurrence of landslide and adoption of countermeasures.

Keywords: Landslide monitoring, High-resolution remote sensing, SIFT algorithm, Deformation field.

Introduction

Landslide is a phenomenon of flow of rock-earth mass on slope along the shear fracture plane and often poses threats to people's life and leads to destruction of property, environment and resources. As a severe geological hazard, the key to its control and reduction lies in its dynamic monitoring and early warning. The traditional landslide monitoring methods include precise geodetic survey, GPS monitoring. These methods belong to spot measuring means and it is difficult for them to obtain the information on spatial displacement field. In recent years, interferometry synthetic aperture radar (InSAR) is becoming an important satellite-based microwave remote sensing technique, possessing significant advantages in the precise analysis of landslides over large areas, and could provide valuable temporal and spatial evolution information of surface deformation with a centimeter to millimeter accuracy in all weather conditions for landslide monitoring, especially for detecting small and slow motions during landslide's incipient stage. 3D laser scanning is

capable of providing high resolution required for analyzing movements and deformations of a landslide. improved the Hausdorff distance algorithm, and presented direct precise comparison algorithm based on octree structure. used the range flow algorithm to determine the 3D motion of an active landslide in Doren, Austria by multitemporal airborne and terrestrial laser scanning. But above methods have both specific advantages and certain shortcomings. As a high-accuracy technique for the monitoring of surface deformation field, InSAR is liable to disposing of loss of phase correlation and phase unwrapping when measurement is made at places where the surface is undulating and extensive slope deformation occurs. The terrestrial 3D laser scanning technique is subject to the restriction of measuring range, and the airborne 3D laser scanning equipment is high in cost and complicated in measuring process, making it hard to realize widespread application. On the other hand, the high resolution images are applied to monitor landslide hazards, mainly focus on the identification of landslide existence, dangerous evaluation and change detection. Nichol et al. applied the IKONOS stereo images to investigation and demonstration in remote sensing techniques for detailed landslide hazard assessment of large areas. progress in calculation and extraction of spatial displacement field of landslide mass through analysis of high-resolution images and the use of the correlation coefficient method, Delacourt et al. calculated landslide displacements using this method based on a number of Quick Bird Satellite images in different periods and mapped out the movement of the slope slide mass with an annual displacement of 2.5–20 m. Gance obtained the related images of the landslide movement in half a year in the area under study with optical camera, and placed white foam balls at surface for enhancement of contrast, and in this way, the landslide displacements were made known through Harris corner-point matching. As stated above, calculation of spatial landslide displacement field can be made using computer image recognition method based on high-resolution images. However, the correlation coefficient method previously used for matching images suffers the drawbacks of being difficult to make calculation and unsatisfactory in accuracy. In view of the above mentioned facts, it is proposed to use the SIFT (scale-invariant feature transformation) algorithm for measurement of large-scale landslide displacement. With the use of SIFT, the cognominal points can be calculated through extraction of the features set of high-resolution images obtained in different phases and matching of images. This makes it possible to calculate the displacement field of landslide and define the extent of sliding mass.

Processing of Remote Sensing Images

Ortho-Rectification

Satellite images, especially the images with large coverage area may undergo distortion during image-forming process because of earth curvature, terrain undulation and sensor altitude and angle of attitude. The distortion is attributed to the geometric deformation of the individual image points in varying degrees. The distortion of image can be eliminated through ortho-rectification. Therefore, when high-resolution image are used for calculating landslide displacements, the original images need to undergo ortho-rectification. This is done by making corrections of projection differences of original images using the digital elevation model (DEM) data (the images obtained and those to be corrected are consistent in extent) for converting the original image into orthogonal images.

Registration of Images

Theoretically speaking, the coordinates of the stable points of the cognominal name observed by the same satellite at different times are consistent. Nevertheless, the stable points on two images may have positional errors due to the effects of satellite attitude, orbital error, structural performance of remote sensing instrument, movement and shape of the earth and the error produced by satellite ground stations in rough processing. So, matching of images is necessitated. This is done in the following way: select one image

among others as a reference for registration with another image, as the study of this paper is to define the landslide displacement field by using high-resolution image registration: (1) The ground control points selected should be uniformly distributed as much as possible; (2) Keep away from landslide area for avoiding offsetting the original deformation of sliding land; (3) Adequate ground control points should be available, otherwise, they are insufficient to serve as a basis for making error correction. The accuracy of registration is ascertained with the total root-mean-square-error (RMS error) as a measure. In general cases, the total RMS error should be controlled within one pixel on flat terrain and in hilly area, and should not exceed 2 pixels in mountain area.

Image Matching. SIFT Algorithm Implementation

SIFT is a feature matching-based algorithm an image of local feature extraction algorithm capable of performing translation, rotation, zooming of images and even keeping invariant in affine transformation. Its main feature is to transform the matching between images into similarity measure between characteristic vectors. It involves three steps: formation of scale space, generation of characteristic points descriptors and matching of characteristic vectors. The detailed description is shown in the document.

Rejection of Mismatching Points

The presence of background noise can possibly lead to mismatching of characteristic points. Such points need to be rejected. Mismatching points are characterized by the slope of the line connecting 2 images, which is obviously different from that of correctly matching points (Fig. 1a).

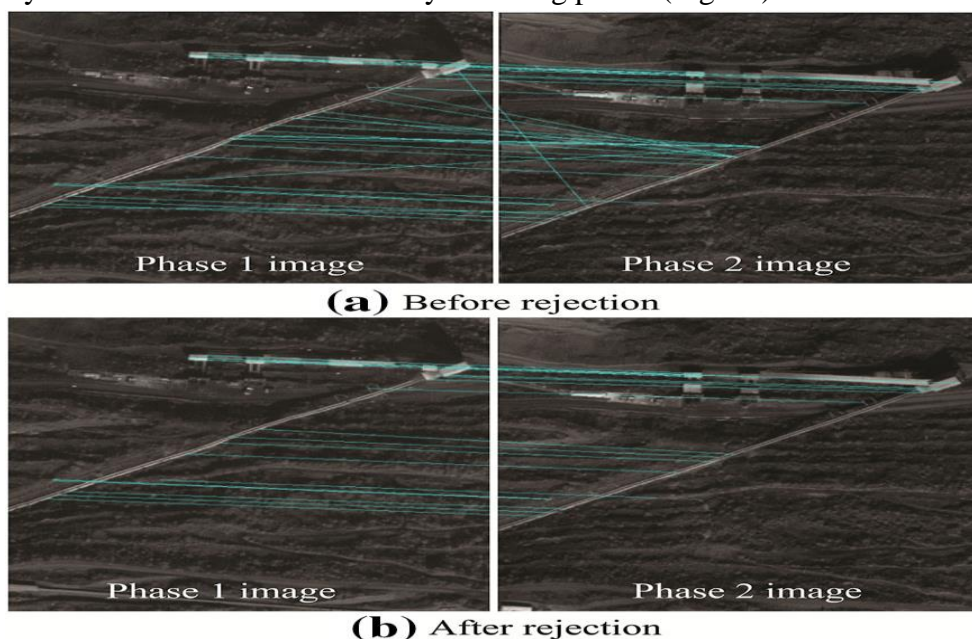


Fig. 1 Matching of feature points before and after rejection of mismatching points

Therefore, mismatching points can be rejected by making use of the above mentioned characteristics in a way as follows: calculate the slopes of the connecting lines of individual matching points, k_i ($i = 1, 2, \dots, n$), and take the mean value k as the true value to obtain the residual errors of individual matching points, $c_i = k_i - k$. If the residual error of the slope ($|c_j| > 3r$) of the connecting line j of a certain matching points is greater than 3 (standard error), the said matching points can be rejected as mismatching ones.

Definition of Landslide Displacements

By following the procedures as described above, the cognominal points in the images at different time periods are determined. The next step is to determine the displacements between two cognominal points. As the points have undergone displacements in the remote sensing images of different time periods, it is required to define the difference of the cognominal points in two images in image space coordinate systems, so as to determine the displacements of the points of the same in land sliding period. The method for calculating the displacements is as follows: calculate first the number of pixels between the cognominal points in two images, and then multiply the calculated value by the actual distance represented by individual points. The technical flow-sheet for defining the landslide displacements and extent is shown in Fig. 2.

Overview of the Study

Open Mine is the largest opencast coal mine in Asia, with length of 6.6 km, width of 2.2 km and depth of 500 m. As a result of mining over 100 years, repeated landslides have occurred at the south and north slopes of the mine. Since 2010, in Qiantai mountain district of the mine’s south slope, a ground fracture with a length of about 3100 m has appeared. In June 2014, the fracture reached a width of 40 m with the maximum drop of over 18 m, and was seen to be moving northward rapidly at a rate of 8–10 cm/day. This leads to the presence of uplift at the bottom and damage of belt conveyors and nearby buildings under the effect of tensile strain (Fig. 4). Although GPS points were available for displacement monitoring, the extent of landslide displacement field failed to be defined because of the low density of monitoring points. D-INSAR was applied to observe the displacement field during the period of 2007–2011 and the information on the displacement field at the mine’s south slope was obtained. However, following

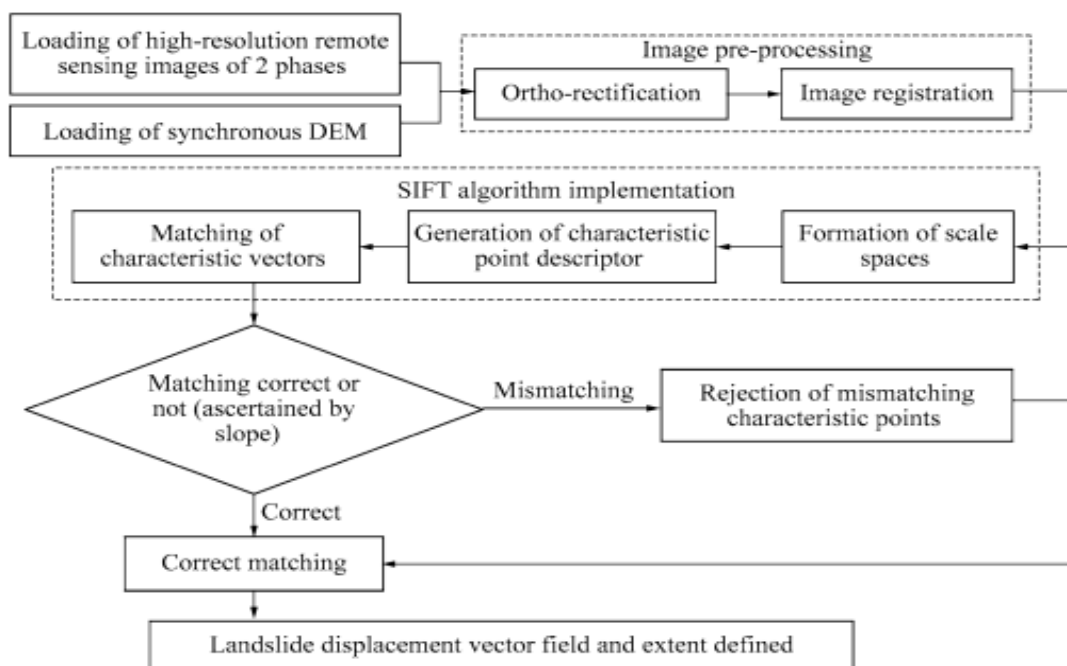


Fig. 2 Technical flow-sheet for defining landslide displacement vector field

Data Selection

Pleíades 1 was successfully launched in December 17, 2011, and its revisit cycle is a day. It has 4 bands, respectively blue band, green band, red band and near infrared band, in addition to one panchromatic band. In the paper, the Pleíades 1B panchromatic band data with a spatial resolution of 0.5 m in 2 phases were selected as data source for measuring displacement field. The acquisition time of the two images was in the

spring without vegetation, snow cover and cloud cover. The data of the 2 phases were recorded at 10:40 respectively on April 21, 2013 and March 18, 2014 (Table 1).

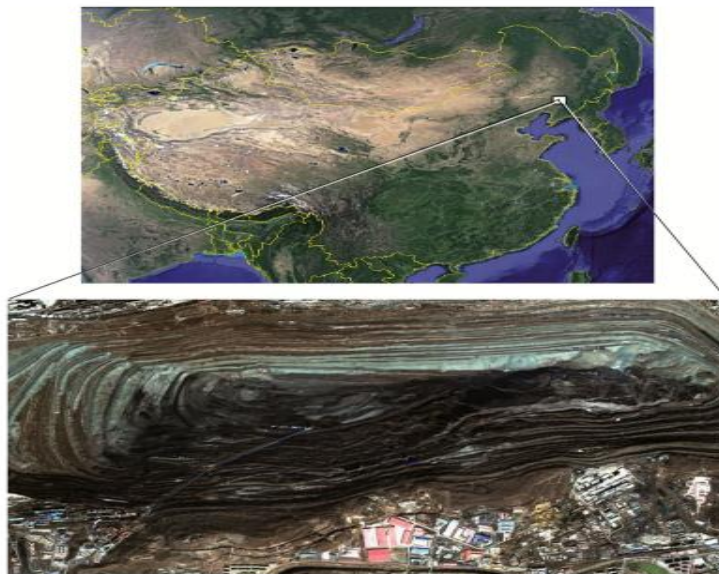


Fig. 3 Location map of the studied area

The entry into 2013, with the increase of displacements, the use of D-INSAR met with phase unwrapping trouble. Such being the case, the support of areal observation means is needed for the monitoring of extensive landslide displacement. Therefore, the high-resolution image-based method is applied for measuring displacement field and defining the extent of landslide.

Data processing

For the images of the 2 phases, the following work is respectively made: ortho-rectification, registration, SIFT algorithm operation, rejection of mismatching points and definition of sliding displacement. Theoretically, for orthorectification of images, the DEM data should be obtained at the same time as that of the high-resolution images and make sure that their spatial resolutions are consistent. However, in actual ortho-rectification of images, their spatial resolutions are inconsistent. For the ortho-rectification of images in this paper, two kinds of DEM data can be used. These are the Aster DEM data in July 2010, actually measured by 3D laser scanning instruments respectively in November 2013 and August, 2014 (Table 2). The latter two are obviously higher in resolution. In order to enable the image data and DEM data to be consistent as much as possible in time, spatial resolution and surface features for reduced error, the image acquired



Fig. 4 Landslide-induced surface phenomena

Table 1 High-resolution image data source

Data source	Image acquisition time	Orbit height (km)	Resolution (m)	Shooting angle (°)
Pleiades full-color band	2013.4.21	694	0.5	17.7
	2014.3.18	694	0.5	6.6

Table 2 Information of the three kinds of DEM data

Time of data acquisition	Acquisition method	Spatial resolution (m)
July 2010	Aster 3D relative extraction	30
November 2013	3D laser scanning instrument point-cloud data generation	0.5
August 2014	3D laser scanning instrument point-cloud data generation	0.5

At April 21, 2013 was ortho-rectified using Aster DEM obtained in July, 2010, while, the image acquired at March 18, 2014 was ortho-rectified using DEM data from 3D laser scanning instrument obtained in November 2013. Registration of images was made manually. For the images of 2013/4/21, the ortho-image of 2014/3/18 was taken as a reference, and the registration was made in a stable area around the pit with well-defined surface features such as the intersection of roads, corners of playground, farmland limits and river mouth as characteristic points.

Monitoring Result

Through the processing procedures as described above, the vector diagram of the displacement field observed at the mine's south slope during the period of 2013.4.21–2014.3.18 was obtained (Fig. 5). In Fig. 5, the yellow arrows indicate the directions of the movement of targets. While the displacements are indicated by the lengths of the arrows. In Fig. 5a, the ground crack and the faults are shown by red lines. It can be seen from Fig. 5, the area encompassed by ground cracks and faults is subjected to a larger displacement up to 37 m. Outside this area, the displacement becomes smaller. As can be seen from Fig. 5, there exist Fault F5 at the eastern limit and Fault F2 at the western limit of the landslide. It is obvious that the development of the landslide towards the two sides is restricted by the presence of the two faults, a fact verified by actual ground investigation. The contour diagram of the displacements of sliding area is shown in Fig. 5b for better demonstration of the monitoring result. From this diagram, the extent of

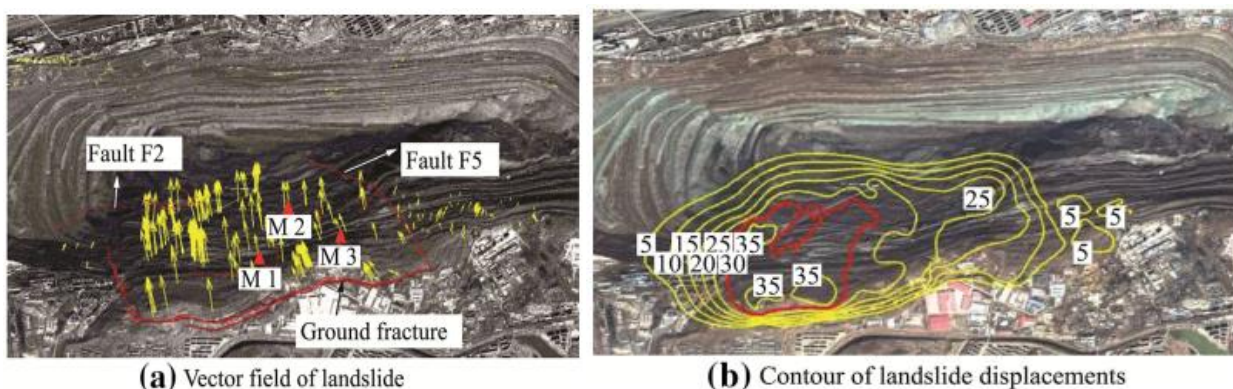


Fig. 5 Result of monitoring of landslide displacement field at Fushun west open mine landslide and the displacements at individual points can be clearly observed.

Accuracy Evaluation

For better evaluation of the monitoring method proposed in this paper and verification of the monitoring accuracy attained, the paper makes a comparison between the result so far obtained and the monitoring result made by GPS points arranged in the mining area (Fig. 5a). Table 3 shows the comparison results, and it indicates that: for the three monitoring points in contrast, M1 has an error of 0.9 m in south-to-north direction and 1.2 m in east-to-west direction, with a total error of 1.5 m; M2 has an error of 1.9 m in south-to-north direction and 0.3 m in east-to-west direction, with a total error of 1.9 m; M3 has an error of 0.2 m in south-to-north direction and 1.5 m in east-to-west direction, with a total error of 1.5 m. As GPS monitoring is relatively high in accuracy (class: mm), the result observed by GPS in this paper is taken as a true value. By comparison, the maximum error of the three points in south-to-north direction is approximately 1.9 m.

The result of the analysis of the error sources is as follows:

(1) For the ortho-rectification error, it comes from the following aspects: High-resolution image not in step with DEM in time: The 1st-phase images were obtained in April 2013 while the DEM used for ortho-rectification was in July 2010. The 2nd-phase images were formed in March 2014 while the use of DEM was in November 2013. They were out of step with each other in time. Furthermore, in the above-mentioned time period, landslide displacement occurred in the study area. This led to the generation of error in ortho-rectification due to change of landform. Results of observation by GPS points M1, M2 and M3 indicate that during the period from November 2013 to March 2014, the vertical sliding displacements of the 3 points were 5.386, 4.701 and 4.880 m respectively. As the high-resolution image shooting angle was 6.608, it can be inferred according to geometric principle of ortho-rectification (Fabio et al. 2009) that the errors produced by the 3 monitoring points in lateral displacement observation were 0.623, 0.543 and 0.564 m respectively. For the error of DEM, it is particularly the case of the 1st-phase data. The DEM data used for this phase were the relative data extracted from Aster sensor on TERRA ground observation satellite launched by NASA. It is relatively low in accuracy, with a horizontal accuracy of around 30 m and a vertical accuracy of approximately 20 m. The DEM's low accuracy unavoidably adds to the error in orthorectification. Likewise, according to the geometric principle of ortho-rectification, and calculated at an image shooting angle of 17.78 and the maximum vertical accuracy of 20 m, it can be deduced that the maximum ortho-rectification error is up to 6.38 m. Such an error brought about by DEM's low accuracy is most likely the major source of errors in landslide monitoring. For the error of ortho-rectification algorithm, currently, the main models used for ortho-rectification involve affine transformation-based strict geometric models, collinear equation model, rational function model and polynomial model. However, in any case, the error is likely to occur because of their incapability to simulate the actual conditions.

(2) Error in image registration In the study, the image registration was done by hand and it was strived to make the cognominal points to be uniformly distributed. However, in order to ensure that the coordinates of the points of the

images in 2 phases were consistent, image registration was made only with the stable features around the surface mine as cognominal points while in the landslide area, unfortunately no such points can be used. Therefore, the points were uniformly distributed. This added to the error in registration in landslide area. Moreover, errors were also produced due to identification of points by naked eye.

(3) Error produced by SIFT algorithm The effect on measuring accuracy produced by SIFT algorithm is decided mainly by image quality (including, among others, spatial resolution, clarity and contrast) and the specific characteristics of SIFT algorithm. The remote sensing images used for measuring landslide displacements at Fushun West Open Mine are Pleiades panchromatic band data with a spatial resolution of 0.5 m. In theory, the error produced by SIFT algorithm should be less than 0.5 m which can be reduced in case of higher image clarity and contrast. It should be noted that the analysis of the source of errors as

described above is made on a factor by factor basis. In fact, these factors are interrelated. As there exists the possibility for them to counteract with one another, reduction of errors can be expected in this case. The total error is therefore, not a sum of individual errors. For example, in the operation of ortho-rectification, the error from high-resolution image not in step with DEM in time and the error from error of DEM may counteract with each other.

Conclusions

An approach for monitoring intensive landslide displacement using high-resolution remote sensing images and SIFT algorithm is proposed in the paper. Application of this method at Fushun West Open Mine indicates that:

- (1) Generally, a landslide appears tiny deformation in the early stage, large deformation in the later stage, and accompanying fracture and swelling in the surface of the ground. The approach proposed in the paper is suitable for monitoring extensive spatial displacement field in the later stage of landslide. The method offers the merits of being low cost, easy to operate and high efficiency.
- (2) A comparison between the proposed method and GPS in field monitoring at Fushun west open mine shows that the accuracy attained through the use of the method is 1.9 m. Analysis of the cause of errors indicates that the errors not only stems from SIFT algorithm itself but also are closely related to orthorectification and registration of images, and more closely to DEM resolution and accuracy. So it is advised to use high-resolution DEM data and to be in the same time with the remote sensing image.

References

1. Luan QZ, Liu HP, Xiao ZQ (2007) Comparison between algorithms of ortho-rectification for remote sensing images. *Remote Sens Technol Appl* 22(6):743–747
2. Nichol JE, Shaker A, Wong MS (2006) Application of high-resolution stereo satellite images to detailed landslide hazard assessment. *Geomorphology* 76:68–75
3. Prati C, Ferretti A, Perissin D (2010) Recent advances on surface ground deformation measurement by means of repeated spaceborne SAR observations. *J Geodyn* 49:161–170
4. Sun D, Roth S, Black MJ (2010) Secrets of optical flow estimation and their principles. In: *IEEE computer society conference on computer vision and pattern recognition*. San Francisco, California, pp 13–18
5. Sun YB, Zhao L, Huang SD, Yan L (2014) L2-SIFT: SIFT feature extraction and matching for large images in large-scale aerial photogrammetry. *ISPRS J Photogramm Remote Sens* 91:1–16
6. Sun Q, Zhang L, Ding XL, Hu J, Li ZW, Zhu JJ (2015) Slope deformation prior to Zhouqu, China landslide from InSAR time series analysis. *Remote Sens Environ* 156:45–57
7. Travelletti J, Delacourt C, Allemand P et al (2012) Correlation of multi-temporal ground-based optical images for landslide monitoring: application, potential and limitations. *ISPRS Photogramm Remote Sens* 70:39–55
8. Yang B, Li XD, Yan L, Yu YS (2014) Mosaic algorithm for aerial remote sensing image and its accuracy evaluation. *Comput Eng* 40(3):253–257
9. Zhao YS, Chen DM, Li XW et al (2013) The principle and method of analysis of remote sensing application. Science Press, Beijing, p 165.